

# Lid

**Bleed**  
Background graphics and background colors must extend all the way to the edge, i.e. 3 mm beyond the final edge.

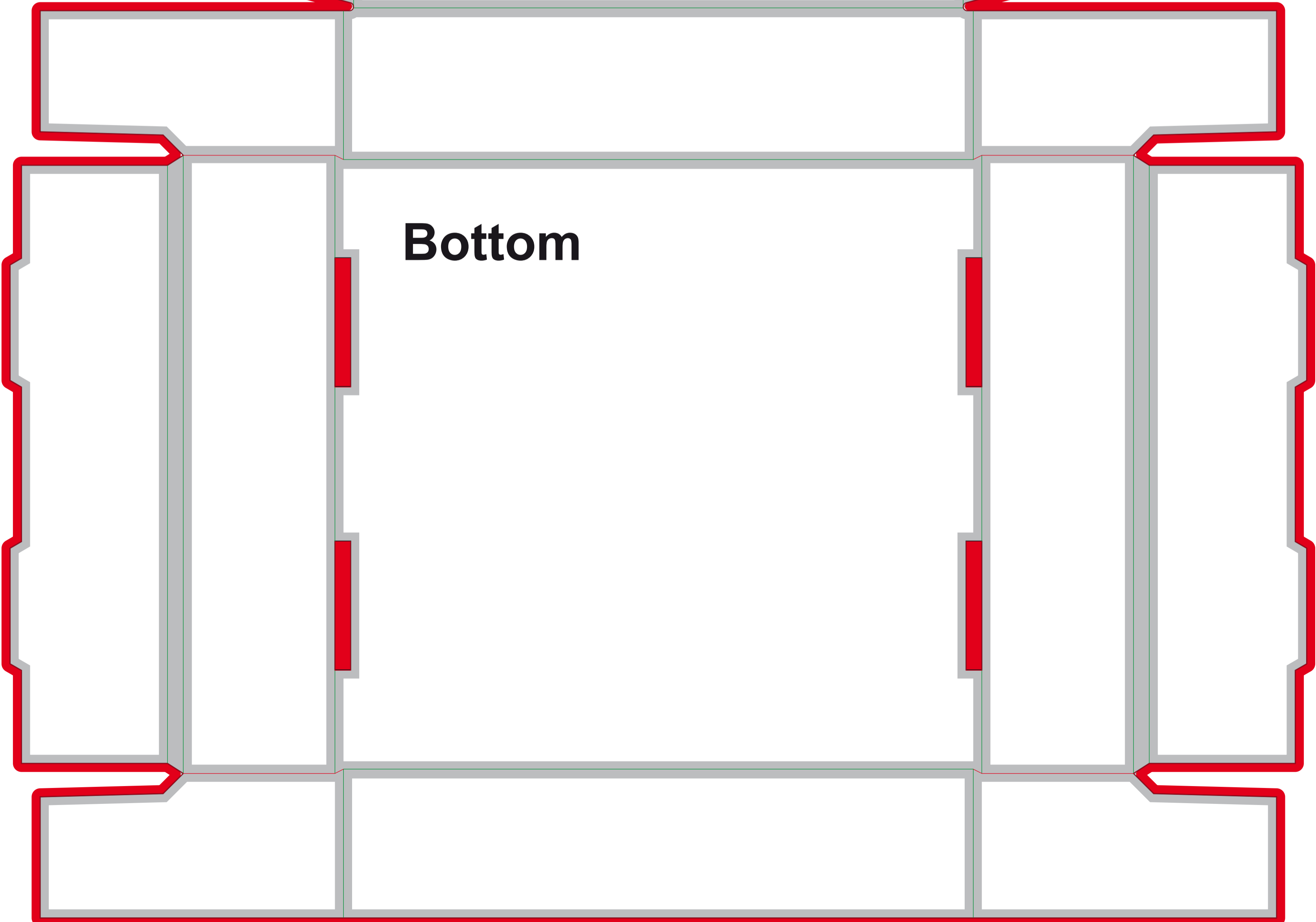
**Final edge**  
Final format after cut.

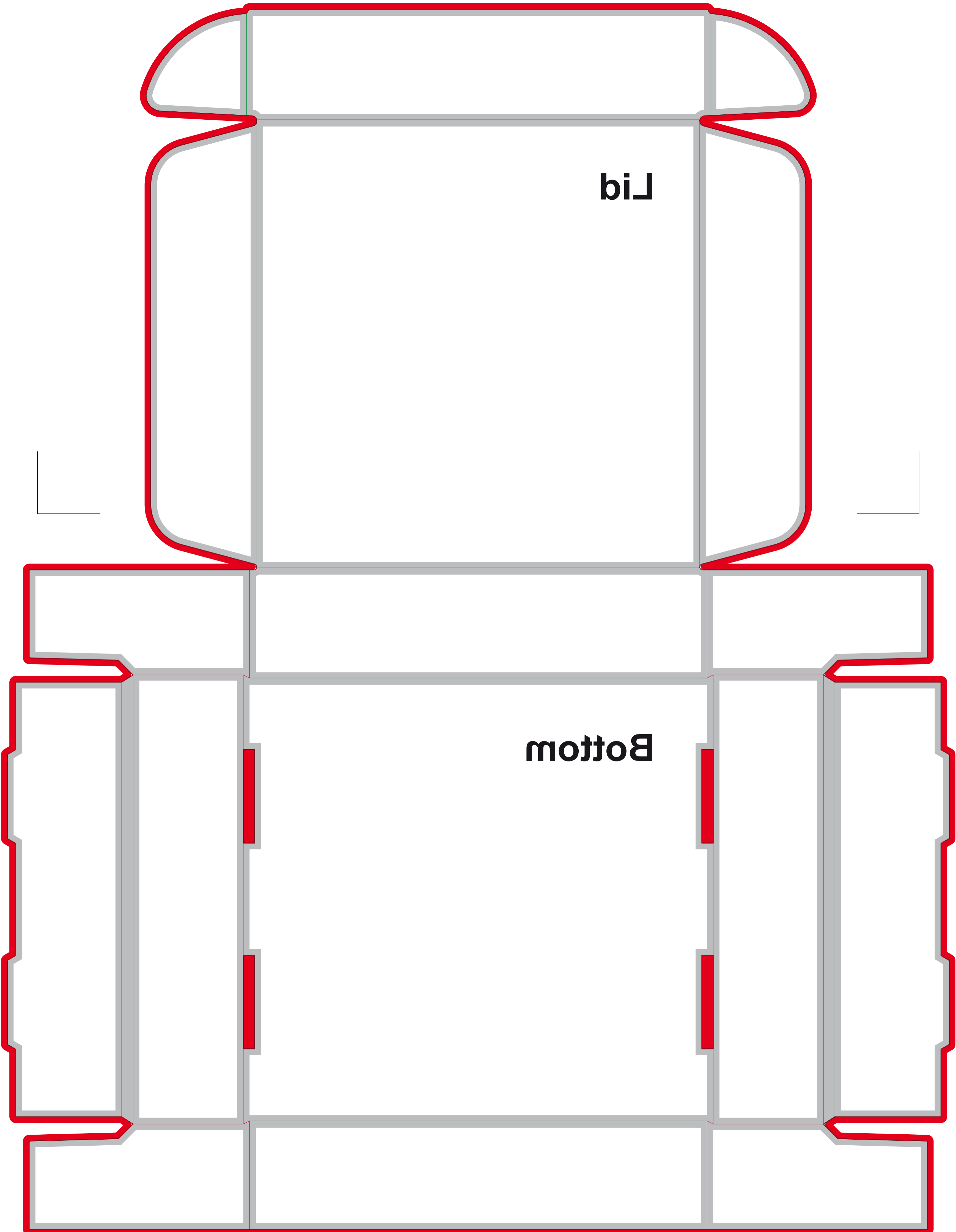
**Fold/bend**  
Here the product is folded/bend.

**Safetyzone**  
Text and images are placed in the safety zone 3 mm from the final edge.

Remember to remove/delete the "Template" layer before the final print file is generated.

# Bottom





**Lid**

**Bottom**